



THE STABLES. KINGTON HEREFORDSHIRE WEB BROCHURE



## MISSION STATEMENT

**To be recognised as a leading provider of self catering accommodation.  
We will do this by creating a unique base for families and groups to stay,  
in a place that feels like home.**

*Our aim is: -*

- *To provide well managed accommodation [with the option for a part or fully catered service] that is warm, welcoming and clean for families, friends and organised groups running their own programme.*
- *To provide a personal service that enables groups to gain the best out of their visit to the Stables*

*Sue & Paul Norton*

House Managers



## WELCOME TO the STABLES

Sue and Paul and their team welcome you to the STABLES at Dunfield House situated close to the Welsh border in a beautiful corner of rural Herefordshire. Dunfield is operated as a charity whose aim is to promote a safe and nurturing environment run on faith based principles. We offer adaptable, comfortable three star group accommodation as a base for people to meet together. The amenities, services and beautiful surroundings will enhance your own programme and provide a sense of awe and wonder, new friendships and lasting happy memories.

**About the Stables:** our recently renovated stables block is situated in the grounds of Dunfield House. We have been awarded a 3 star rating for group accommodation [www.visitbritain] with the added opportunity for guests to have shared use of 15 acres of grounds, our indoor heated swimming pool, campfire sites, adventure playground and games rooms

**About the Accommodation:** The stables sleeps 22 people in 8 bedrooms, with four chair beds in the lounge as an overflow at no extra cost, apart from lounge space! The large kitchen is well equipped for catering with a large 6 burner gas range, microwave, toaster, fridges and freezer and crockery and utensils. The conservatory adjacent to the kitchen is used as a dining room but is also suitable for group work/relaxing or watching the birds feeding at other times of the day. A large lounge with doors to the courtyard offers the opportunity to relax and share with others and is great for a BBQ [gas one can be hired] catching the evening sun.

Bedrooms 1, 2, 3 are on ground level with room 1 having the option of being an ensuite room. Bedrooms 4 – 8 are situated on the first floor. There are 16 single or lower bunks and 6 top bunks which afford the option for family, couples and individual rooms depending on your group dynamics. All rooms have wash hand basins with two spacious level access showers [4] and toilets [6] facilities at each end of the accommodation.

**About Dunfield House:** The house offers similar group accommodation for larger groups who require a catered service. There is a tuck shop in the house that can be used by arrangement but both buildings remain the sole occupancy of each group on site. At any one time there will only be one other party onsite, at times you will have sole use of the site. Our grounds of 15 acres are largely left to their natural state; there are however ample spaces for volleyball, football and team games along with an adventure playground and trampoline. There are two campfire sites, indoor heated swimming pool [maintained around 28 degrees centigrade] and a large recreation hall suitable for indoor games with a pool table and 3 table tennis tables that may be booked for your group.



**About a Part or Fully Catered Service:** Whilst the Stables is primarily self-catering accommodation we can offer at certain times of the year a part or fully catered service. Up to three locally sourced wholesome meals are prepared each day along with a supper of local cheeses, biscuits, and homemade cake made available to round off your day. We provide a set menu for your group but we are happy to discuss menu options with you to ensure that we meet the specific needs of your group. Individual meals are prepared for those members of your group who have special diets for religious, medical or ethical reasons.

**About what you need to bring:** All bedding is supplied by Dunfield House and bedding packs can be collected from and returned to central points as you arrive and on the morning you leave. All guests are responsible for bringing their own towels and toiletries and personal requirements for the duration of their visit. In order to keep costs to a minimum guests are asked to keep their own and communal rooms tidy, especially making sure that fire escapes are free from clutter.

**About Facilities for people with disabilities:** the Stables is within the curtilage of Dunfield House which is a grade II listed building with limited level access facilities/accommodation. The Stables has been recently renovated to make the most of the space offering level access ground floor communal facilities along with three ground floor bedrooms. Please contact us to discuss specific needs of your guests. We do have access to aids and equipment [eg commode, shower seat, shower/changing trolley, bed sticks, wheelchair etc] to assist guests during their stay. These will need to be ordered prior to arrival

**Additional resources:** Additional resources such as television, video & DVD are available *[please note these cannot receive television channels]* disco lights, multimedia projector, overhead projector, piano & organ, white boards. A photocopier is available with a nominal charge made for large quantities of copying.

**About Groups using Dunfield:** The Stables is an amazing base for three generation families and groups of families who need activities to suit all ages. Other groups include educational school visits, church groups [providing youth, young adult, family camps and retreats], youth organisations, orchestras, band camps, charities and training courses. Groups that currently use the Stables are often make return bookings and are always happy to share their experience of how Dunfield works for their group.

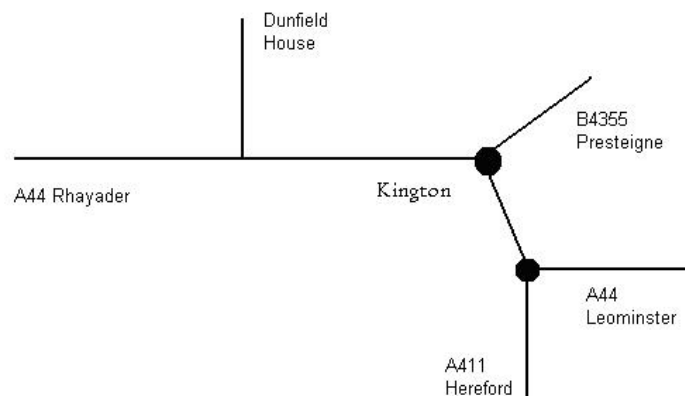
**Visit the Stables prior to booking:** A visit to Dunfield house is well worthwhile to familiarise yourself with the facilities available here if your programme has specific aims and objectives that you wish to meet.



## 2012 PRICE TARIFF & DIRECTIONS

<b>Self Catering – Stables Only:</b> <i>Facilities for up to 25 people in self contained Stables Building – meals can be booked from the main house on request</i>	
	inc 20% VAT
24 hour block booking Friday/Saturday night [per night]	400.00
24 hour block booking Sunday/Thursday [per night]	375.00
Breakfast per person if required	<i>price on request</i>
Lunch [or packed lunch] per person if required	
Evening Meal per person if required	

### DIRECTIONS to the STABLES [POST CODE HR5 3NN]



#### From Leominster or Hereford

- Follow A44 through Kington [over two roundabouts] signposted Rhayader
- After approximately 2 ½ miles turn right [brown tourist sign – DUNFIELD HOUSE]
- Follow the lane up a small incline for approximately ½ mile & Turn right over the cattle grid
- There is car parking at the top of the drive; the reception is immediately opposite you at the right side of the house.

#### From wales

- take A44 at the Crossgates roundabout, signposted to Hereford & Leominster
- approximately 16 miles along the A44 you reach the border between England and Wales

#### Travelling by Car

- after approximately 1 mile turn sharp left [brown tourist sign – DUNFIELD HOUSE]
- Follow the lane up a small incline for approximately ½ mile & Turn right over the cattle grid
- There is car parking at the top of the drive; the reception is immediately opposite you at the right side of the house
- 

If using SATNAV ensure you arrive via the A44,  
some systems like to bring you up a very narrow lane off the B4362 :)☹



<b>Dunfield House Booking Form</b>		
Name of Group <i>[if applicable]</i>		
Name of Group Leader		
Contact Address		
Post Code		
Contact Telephone [work]		
Contact Telephone [mobile]		
Contact telephone [home – if applicable]		
Email Address		
Booking period required:		
<b>Accommodation required</b> <i>[please indicate]</i>	House & Stables	Full Board
	House only	Full Board
	Stables	Self Catering
	Stables	Catered service
	House /Stables	Catered Day Visit
Anticipated number in Group		
Deposit required:		
Fully catered weekend in the main house or stables	= £10 per guest	
Fully catered three nights or more in the main house or stables	= £20 per guest	
Self catering – stables	= £100 per night	
Day Visit	= £75	
Notes:		
<p>I have completed the booking form and enclosed the correct deposit for my booking. I confirm that I have read the attached terms and conditions [two pages] of my booking and agree to abide by the booking process, minimum numbers, cancellation policy and management of my group whilst visiting Dunfield House.</p>		
<p>Signed:.....Date:.....</p>		



## TERMS & CONDITIONS

### BOOKING PROCESS

<b>Initial Contact</b>	<b>Provisional</b>	<ul style="list-style-type: none"> <li>A provisional booking made by telephone, email or letter can be held for up to one week. A booking form will be sent to you with booking terms and conditions and a communication checklist. The date provisionally held will be made available to other groups at the end of the seven day period.</li> </ul>
<b>Contract 1</b>	<b>Booking Contract</b>	<ul style="list-style-type: none"> <li>To secure your booking a completed booking form and deposit must be received. Booking will be confirmed by return.</li> <li><i>nb: payment in full is required if booking is made within 6 weeks of visit</i></li> </ul>
<b>Contract 2</b>	<b>Final Invoice, housekeeping &amp; special diet requirements for fully catered service</b>	<ul style="list-style-type: none"> <li><b>6 weeks prior to visit:</b> final payment required based on anticipated numbers.</li> <li><b>2 weeks prior to visit:</b> Final group numbers, meal requirements and special diets if fully catered service is required need to be sent to Dunfield via email or post.</li> </ul>
<b>Contract 3</b>	<b>Adjustment Invoice</b>	<ul style="list-style-type: none"> <li>To be settled within 30 days of the visit. Payment in full is required if booking is made within 6 weeks of visit</li> </ul>
<b>Late settlement</b>	<b>Final account</b>	<ul style="list-style-type: none"> <li>In the rare instance where an account is not settled by the due date, a surcharge of 2% on the outstanding balance will be made to cover administrative costs. This surcharge will be incurred for each month thereafter until the account is settled</li> </ul>

### MANAGEMENT OF YOUR GROUP:

We recognise that we have a duty of care to groups who visit the centre and have implemented assessments, checks and procedures which are reviewed at regular intervals. However, the designated group leader of your party remains responsible for the supervision and safety of all group members for the duration of your stay. Dunfield House Limited provides accommodation, meals [if catered service is booked] and a maintenance service. Dunfield House Limited does not currently employ staff to supervise your group. You should be aware that the people in your charge must be supervised at all times to ensure their safety. The group leader should check facilities before the commencement of any activities and any issues or concerns must be reported to Dunfield House Limited prior to the activity taking place.

General risk assessments for the property are available on request. Risk assessments specific to members of your group and the activities that you carry out as part of your visit to Dunfield remains the responsibility of the designated group leader.

### MINIMUM NUMBERS

ACCOMMODATION		LOW SEASON [NOV TO FEB]	MID SEASON [MARCH, APR & SEP, OCT]	HIGH SEASON [MAY, JUNE, JULY, AUGUST]
House & Stables	Full Board	50	60	65
House only	Full Board	35	40	50
Stables	Self Catering	N/A	N/A	N/A
Stables	Catered service	15	15	15



**REPEAT BOOKINGS**

Repeat bookings year on year are secured for groups who meet the minimum numbers for their visit. Groups will be offered the opportunity to book Dunfield at short notice if their group size falls below the minimum number however, this date cannot be guaranteed on a yearly basis.

**ADDITIONAL INFORMATION**

- If your party is less than 65 but you would like sole use of the site please contact us to discuss options
- If final numbers fall below the minimum requirement at the time of your visit then a charge of 75% per person below the minimum number will be incurred
- *You are strongly advised to take out holiday and travel insurance to ensure that you are financially covered for a shortfall in numbers, guests cancelling at the last minute, ill health etc*
- We reserve the right not to accept a booking without reason but especially where it may contradict the ethos and spirit of how Dunfield operates

**CANCELLATION OF BOOKING:**

Cancellations **MUST** be made in writing; the following charges will be incurred –

		% OF FULL COST TO PAY
CANCELLATION WITHIN	26 weeks	Deposit Only
	25 weeks	25% of full cost
	13 weeks	50% of full cost
	6 weeks	75% of full cost
	2 weeks	100% of cost



## INFORMATION to help with PLANNING

**Stables Arrival & Departure:** Arrival is from 4:00pm onwards unless prior arrangements have been confirmed with the manager on duty. Departure is by 10:30 on your final day. The option to stay until after lunch is available at certain times of the year

**Fire precautions:** The Stables meets current legislation for fire safety. Please familiarise your party with the fire regulations specific to the stables. Group leaders are asked to ensure that all personal electrical goods are switched off and unplugged when not in use or if left unattended.

**Special diets [if catered option chosen]:** We are happy to provide special diets to members of your group for religious, medical or ethical reasons if a catered service is booked.

**Tuck shop:** There is a tuck shop onsite selling sweets, drinks and souvenirs. Liaison with the manager on duty will ensure that this is open at times to suit your group activities.

**Heating:** The Stables are fully centrally heated and due to fluctuations in temperatures outside the building and to be flexible within your planned activities you can control the temperature by thermostat in both buildings.

**Woodburner:** we ask that you only use wood supplied by Dunfield House on the woodburner, using wood from the grounds may well create a 'soot' problem in the chimney if the wood is not seasoned. We supply a basket of wood at minimal cost.

**BBQ:** we have a gas barbeque available for groups to hire for the part or full duration of their stay. A £25 deposit with £15 returnable if the BBQ is cleaned after use

**Students under 18:** Where a group booking includes children under 18, who will not be in the constant care of their parent/guardian, we would expect the group leaders to be compliant with current child protection legislation.

**Smoking:** Dunfield House operates a smoke free environment within all the buildings and grounds.

**Alcohol:** The public consumption of alcohol is not allowed on the Dunfield property.

**Additional Resources:** Group leaders will be responsible for the care and safe return of all resources loaned during the period of the booking. A member of your group will check these items with the manager on duty by 9:30 on day of departure. All losses and/or intentional damages will be added to your final invoice.

**First Aid:** You are responsible for meeting the first aid needs of your group. The nearest doctors and minor injuries unit is in Kington, which is 2 miles away. The nearest accident and emergency service is located at the County Hospital in Hereford, which is 20 miles away, although 24 hour paramedic services are located in Kington. Dunfield has a defibrillator with staff trained to use in the event of a cardiac arrest on the premises.

**Noise:** We are located in a very rural area but noise generated can carry. To avoid disturbing other people onsite or our neighbours please ensure that noise is kept to a minimum during the hours of 10:30pm to 7:30am.



**Liability:** Dunfield House has Public Liability and Employers' Liability Insurance. Groups requiring personal cover are advised to contact their own insurance companies. Dunfield House Staff & Board cannot accept liability for damage to, or loss of personal property. Individuals are advised not to bring items of value with them. Dunfield House provides a small safe for use by the group leader or designated person.

**Damages:** Due to people respecting Dunfield House, damage to the property is extremely rare. However we do ask that damages be reported as soon as possible; we accept that accidents happen and our aim is to ensure that nobody is put at risk by unreported damages. However, the group leader will be responsible for the cost of repairs and replacements for any non- accidental damage to the property caused by their group.

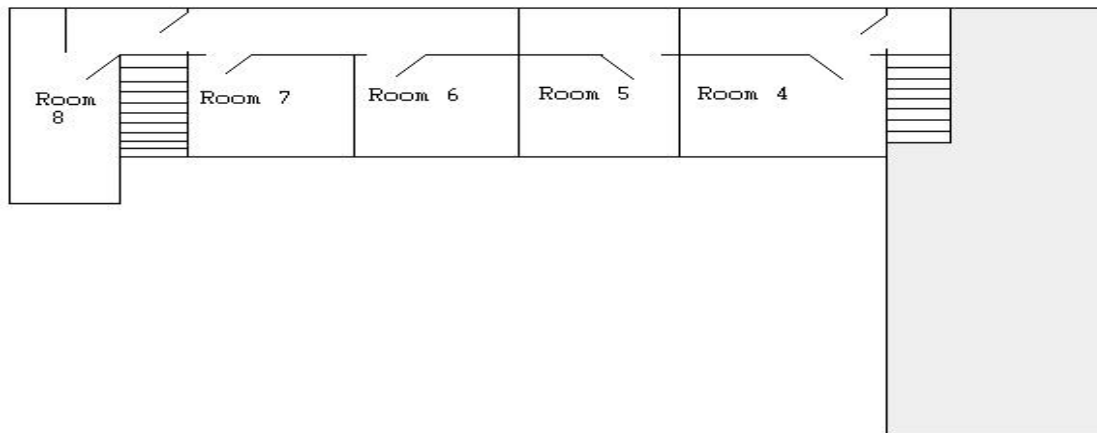
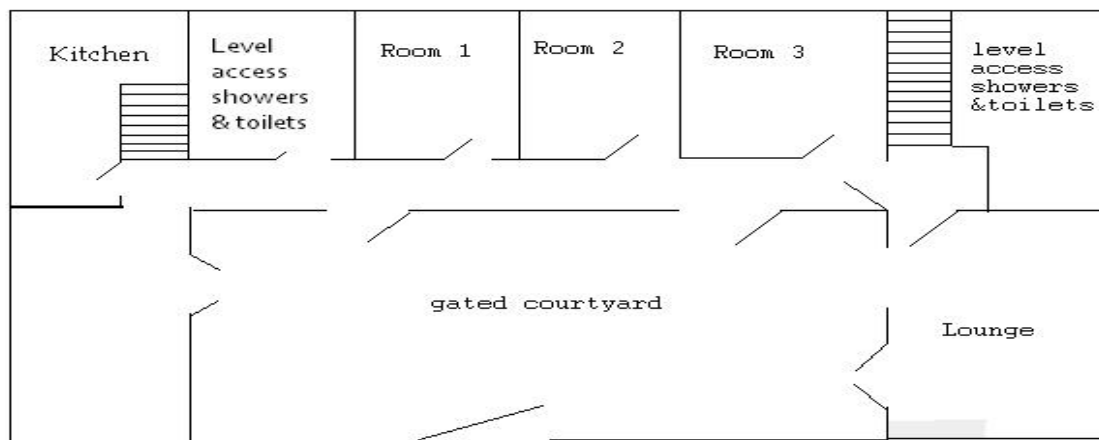
**Complaints:** The manager on duty will be available 24 hours [limited service between 7:30 pm & 7:30am] to deal with any difficulties that may arise during your visit. We ask that you raise concerns as they occur, as it is far easier to deal with situations as they happen. In the unlikely event of a complaint not being satisfactorily resolved, you can forward your concerns in writing to the Managing Director c/o Dunfield House, where standard procedures will be followed.

**Departure from Dunfield House:** On the morning of your departure we ask that you put all used bedding [sheet, pillowcase and duvet cover] in the trolleys situated at the bottom of the stairs before your group has breakfast. We ask that you vacate your rooms by 9:30am and that you leave the property by 10:30 am unless prior arrangements have been confirmed.



Floor plan for STABLES

[Not to scale]





**Further Information:** Please do not hesitate to contact us to discuss a booking with us at the Stables, we want you to experience the rural beauty of the area and come to love this wonderful part of the country as we do.

Dunfield House is under the management of THE DUNFIELD CHARITY EXECUTIVE COMMITTEE with Richard Chapman, Mission Centre President of the church in the chair. The company DUNFIELD HOUSE LIMITED carries out the day-to-day management of the centre with David Frost in the chair. Sue and Paul Norton took over as managers on 1<sup>st</sup> November 2005 and work with the Head Cook Sarah Still and a staff team currently of ten people, whose aim is to provide a warm welcoming environment for you and your group.

**Sue & Paul Norton**

House Managers  
Dunfield House,  
Kington,  
Herefordshire,  
HR5 3NN

Tel: 01544 230563 & Fax: 01544 231189  
Email: [centremanager@dunfieldhouse.org.uk](mailto:centremanager@dunfieldhouse.org.uk)  
Web page: [www.dunfieldhouse.org.uk](http://www.dunfieldhouse.org.uk)



Sue, Paul and the team look forward to your visit



## ACTIVITIES FOR FAMILIES & YOUNG PEOPLE AROUND & ABOUT DUNFIELD

### Activities onsite – included in tariff

- **Indoor heated swimming pool** – 1 38 metres constant depth, approx 27 – 29 degrees. 10 x 4.5 metres in own separate building. Doors open onto sun terrace
- **Football/Volleyball** – football and volleyball nets and grassed areas available
- **Adventure Playground** – small play area for Key stage 1 & 2
- **Trampoline** – available for everyone to have fun
- **Orienteering** - two routes suitable for key stage 2 [lower & upper]
- **Campfire sites** – collect your own wood, build your own fire and enjoy the experience sitting under the stars
- **Treasure Trail:** outdoor adventure quest suitable for primary school age or family groups, to help Dr Hoot finish his mission
- **Peacemobile:** a series of interactive exhibits designed for children and families to explore peace for themselves, each other, their community and the world
- **Picture quiz** – two available, one indoor and one outdoor – suitable for key stage 2 [lower & upper]
- **Written quiz** – suitable for key stage 2 [lower & upper]
- **Games room** – 3 table tennis tables, pool table – suitable for all
- **Walks from Dunfield** – Routes suitable for all ages and abilities making the most of the hills and valleys, remote and rural. Either far from the madding crowd or designed to take in a tea shop, gardens or shops.

### Activities offsite – radius 30 minutes drive:

[www.owlcentre.com](http://www.owlcentre.com)

small breeds farm and owl centre, A magical place to experience animals, birds, and owls. Very interactive and hands on, independently managed, café. Approximately 10 minutes away

[www.kingtonmuseum.co.uk](http://www.kingtonmuseum.co.uk)

small independent museum in the middle of Kington celebrating local life and legends. Kington museum welcomes visitors of all ages. The development of educational packs to assist local schools, using local heritage resources to teach about a variety of subjects are available. They also have a Talking Tactile Tablet and a series of multi-sensory booklets to assist visually impaired users access information about their collections

[www.kington.org.uk](http://www.kington.org.uk)

Kington is an historic market town on the English/Welsh border, and though on the western side of Offa's Dyke, it has been an English town for a thousand years. Kington possesses an attractive riverside recreation ground which houses the town's cricket club and is the venue for many local outdoor events. Kington Golf Club's 18-hole course on Bradnor Hill is said to be the highest in England, over 390 metres above sea level. Kington is a "Border Town" in the Marches in an area where it rightly claims to be a centre for walking

For those self catering Kington has many independent traders. 1 NISA and 1 Co-op supermarket along with local bakeries, butchers, organic fruit, veg and fish and health shops. Approximate 5 minute drive

[www.treasuretrails.co.uk](http://www.treasuretrails.co.uk)

A Treasure Trail to help you explore Kington in a fun and different way. Each Trail includes an **easy to follow route** which will take you to the most interesting and beautiful sights in that location. Along the way you have **clues to solve** with the answers located on existing monuments, buildings and structures – some are easy to find, some of fiendishly tricky! Each Trail can be completed **in your own time** and at your own pace There is a £5 cost from the site.



[www.presteigne.org.uk](http://www.presteigne.org.uk)

Presteigne, (Llanandras in Welsh), was once the county town of Radnorshire and nestles at the heart of the Marches on the border of Wales and England. Surrounded by devastatingly beautiful, unspoilt countryside, this thriving border town has many unique qualities that make it both a perfect destination and a base from which to explore. Presteigne is another small town with independent traders, craft shops, tea shops here, approx 20 minutes away.

[www.judgeslodging.org.uk](http://www.judgeslodging.org.uk)

From the stunningly restored judge's apartments to the dingy servants' quarters below you can explore their gaslit world. Damp cells remind you of the building's true purpose, along with the vast courtroom where your imagination is captured by the echoing trial of William Morgan, local duck thief. Visitors to the building are accompanied by an eavesdropping audiotour of voices from the past; you will hear their tale, from Mary the hardworking maid, to Reverend Richard Lister Venables, Chairman of the Magistrates and employer of the famous diarist Francis Kilvert, portrayed by actor Robert Hardy. Approx 20 minutes away

[www.owlactivities.co.uk](http://www.owlactivities.co.uk)

quad biking, junior quads, raft building, paintball, aerial tree trekking, high ropes, climbing & abseiling, it's a knockout, corporate activity days, team building, development, leadership training etc

[www.knightontown.net](http://www.knightontown.net)

The Welsh name for Knighton is Tref-y-Clawdd which means "Town on the Dyke" and it is the only Town that stands right on Offa's Dyke. Knighton is the home of the Offa's Dyke Centre and is the natural base from which to explore The Dyke. The Dyke was built toward the end of the 8th Century by King Offa to separate the kingdoms of Mercia from Wales. It ran for 149 miles from Chepstow to Prestatyn and some 80 miles of The Dyke is still traceable today. Knighton is steeped in history with sloping winding streets and half timbered houses, the older part of the Town has a grid of streets reminiscent of an Edwardian plantation. Knighton is an area of truly outstanding natural beauty and is a good place to visit whether you are striding the length of Offa's Dyke or exploring the surrounding area.

[www.thomas-shop.com](http://www.thomas-shop.com)

The Thomas Shop **Museum** is distinctively **nostalgic** and evocative of times gone by. Established in 1730, the current shop is the modernisation of 1805, and spans 4 centuries of service to the community. Described as 'the restoration of a village treasure' it now contains an extraordinary collection of memorabilia mostly donated by members of the community. Lovely tea shop and home made cakes.

[www.heartofwales.co.uk](http://www.heartofwales.co.uk)

pony trekking for one or two hour rides covering beautiful countryside. [other providers in the area but this centre has been popular with many of our groups]

[www.llandrindod.co.uk](http://www.llandrindod.co.uk)

**Llandrindod Wells** is a firmly placed 'hub' of Wales and hive of activity. Branching out from its fine central location are a wealth of historic places & events, natural & manmade beauty spots and future promise. In addition to the originality contained in the local arts and craft shops, the variety of products and services offered on and off the main streets there are numerous warm and welcoming restaurants. Llandrindod Wells truly has a character born of its 'Victorian Heyday'; a well maintained and rustic charm - but with all the modern conveniences.

[www.builth-wells.co.uk](http://www.builth-wells.co.uk)

market town situated on the river wye with walks, playgrounds and independent local shops , tea shops and restaurants'. Approx 30 minutes away



### **Gardens & Garden Centres:**

[www.hergest.co.uk](http://www.hergest.co.uk)

Hergest Croft Gardens lies in the heart of the Welsh Marches with stunning views towards the Black Mountains. There are gorgeous flower borders. An old fashioned Kitchen Garden, Azalea Garden, Maple Grove, and Park Wood, all to discover. With a Gift Shop and Tearooms the Gardens are the perfect place to explore and relax.

[www.whimblegardens.co.uk](http://www.whimblegardens.co.uk)

Tucked away on the southfacing slopes of The Radnor Valley this richly planted garden is a subtle tapestry of colour throughout the season. In the main garden a yew walk leads into a box-edged parterre planted with bulbs, perennials and some unusual annuals. Beyond, an airy wiremesh "church" creates an eccentric and attractive frame work for roses and rare clematis. A small garden is scented by a hedge of Hidcote lavender, and a gate cuts through a beech hedge leading to the meadow beyond which even finer views of the surrounding hills can be seen from the balustraded toposcope. This is an inspiring and satisfying place to visit and boasts a lovely tea shop with home made cakes. Approximately 10 minutes drive

[www.wyevale.co.uk](http://www.wyevale.co.uk) – national chain of garden centres – approx 30 minutes drive

[www.oakchurch.net](http://www.oakchurch.net) – independently owned food hall, restaurant and garden centre – approx 20 minute drive

### **Within 1 hours drive of the centre:**

[www.grovegolfandbowl.co.uk](http://www.grovegolfandbowl.co.uk)

ten pin bowling, small café and good restaurant. 9 & 18 hole golf course approx 40 minutes away

[www.tgsbowling.co.uk](http://www.tgsbowling.co.uk)

17 lanes ten pin bowling, 12 holes adventure golf, American Bistro approx 40 minutes away

<http://www.lifechangingactivities.com/>

Can offer your party climbing, abseiling and canoeing, [gorge walking](#), survival training, raft building, caving, team challenges. A brilliant website to access

[www.courtfarmleisure.co.uk/mbc.htm](http://www.courtfarmleisure.co.uk/mbc.htm)

mountain boarding approx 40 minutes away

[www.visitherefordshire.co.uk](http://www.visitherefordshire.co.uk)

*probably fits in both sections – within 30 minutes and over 1 hour*

[www.leominster.co.uk](http://www.leominster.co.uk)